

SHOPRO[®]

PROFESSIONAL

Featuring new designs and advanced lighting technology, SHOPRO Professional heavy-duty work lights deliver powerful, reliable illumination for demanding jobsites. Built with durable construction and versatile setups, these lights offer improved performance, wider coverage, and dependable operation for construction, maintenance, and industrial applications.







Designed for worksites, garages, and jobsite environments, this 360° LED area light delivers bright, uniform illumination for large work areas and enclosed spaces. Adjustable output levels allow light intensity to match the task, while cordless battery operation provides flexibility where power is not available. The wide base ensures stable placement on floors and work surfaces, and the compact design makes it easy to transport and position. Built with durable materials and weather-resistant protection, this light provides dependable performance for construction, maintenance, and service work.

NEW

360° POWERCORE CORDLESS LED WORK LIGHT - 5,000LM

- **360° Area Illumination:** High-output LED lighting with 1250 / 2500 / 5000 lumen settings for adjustable jobsite brightness.
- **Wide Jobsite Coverage:** 360° light distribution provides uniform lighting for work areas, rooms, and enclosed spaces.
- **Multi-Level Brightness Control:** Low / Medium / High modes allow light output to be adjusted based on task requirements.
- **External Tool Battery Power:** Operates with 18V cordless tool batteries (not included) for flexible jobsite power.
- **Multi-Brand Battery Compatibility:** Includes adapters for DeWalt®, Milwaukee®, Makita®, Bosch®, Metabo HPT®, and RIDGID® batteries (adapters included). No sponsorship or affiliation with third party brands suggested or implied.
- **Integrated USB Charging:** 5V / 1A USB output allows charging of mobile devices and small electronics.
- **Durable Jobsite Housing:** PC + nylon construction built to handle regular use on construction sites and workshops.
- **Weather Resistant:** IP44 rated protection helps resist dust and water spray.
- **Compact Portable Design:** Measures 13.6 in (34.6 cm) high for easy placement and transport.
- **Stable Base Mounting:** Wide base supports stable placement on floors, work surfaces, or temporary jobsite setups.

L002914 1/4
CASE

MULTI BATTERY
18V - 20V COMPATIBLE

ADAPTERS INCLUDED





1,200
LUMENS



NEW

CORDLESS LED PIVOT HEAD SPOTLIGHT - 1,200LM

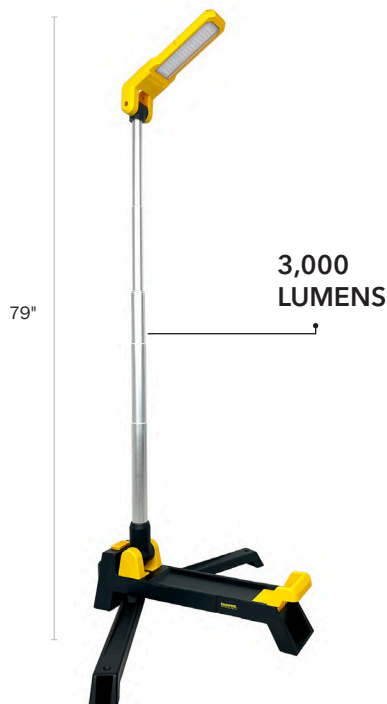
- **Multi-Mode Illumination:** Provides 650 / 750 / 800 / 1200 lumen outputs with selectable flashlight, spotlight, floodlight, and full light modes.
- **Pivoting Light Head:** Adjustable head directs the beam for inspection work, task lighting, and focused illumination.
- **Dual Beam Design:** Central LED spotlight with surrounding SMD LED ring provides both focused and wide-area lighting.
- **External Tool Battery Power:** Operates with 18V cordless tool batteries (not included) for flexible jobsite power.
- **Multi-Brand Battery Compatibility:** Includes adapters for DeWalt®, Milwaukee®, Makita®, Bosch®, Metabo HPT®, and RIDGID® batteries (adapters included). No sponsorship or affiliation with third party brands suggested or implied.
- **Durable Jobsite Housing:** PC + TPR construction provides impact resistance and improved grip.
- **Lightweight Handheld Design:** Weighs approximately 1.2 lb (540 g) for comfortable handheld operation.

L002950

1/12
CASE

MULTI
18V - 20V **BATTERY**
COMPATIBLE

ADAPTERS INCLUDED



79"

3,000
LUMENS



21"

NEW

CORDLESS LED POWERPIVOT FOLDABLE WORK LIGHT - 3,000 LM

- **High Output Illumination:** Provides up to 3000 lumens with selectable 1500 / 3000 lumen settings for adjustable jobsite lighting.
- **Adjustable Pivot Light Bar:** Folding light bar pivots to direct light where needed for task lighting, inspection work, or area illumination.
- **Multi-Color Temperature Lighting:** Selectable 3000K / 4000K / 6500K lighting for warm, neutral, or daylight output.
- **Stepless Brightness Control:** Supports continuous dimming for precise light adjustment during use.
- **External Tool Battery Power:** Operates with 18V cordless tool batteries (not included) for flexible jobsite power.
- **Multi-Brand Battery Compatibility:** Includes adapters for DeWalt®, Milwaukee®, Makita®, Bosch®, Metabo HPT®, and RIDGID® batteries (adapters included). No sponsorship or affiliation with third party brands suggested or implied.
- **Folding Compact Design:** Light bar folds flat for easier storage and transport between jobsites and a carrying bag is included.
- **Durable Jobsite Housing:** PC construction built to withstand regular jobsite use.

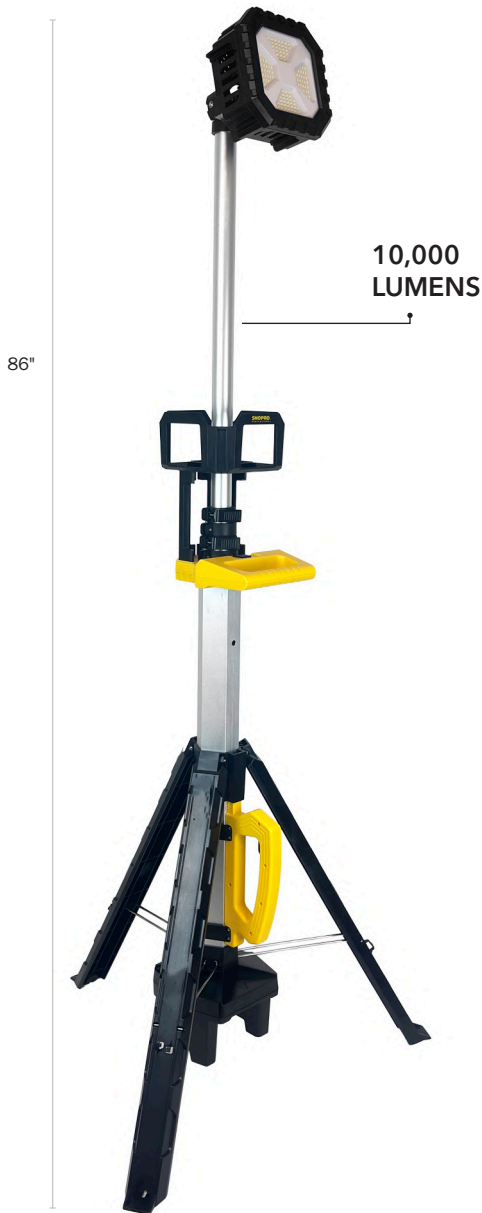
L002940

1/4
CASE

MULTI
18V - 20V **BATTERY**
COMPATIBLE

ADAPTERS INCLUDED





Designed for worksites, garages, workshops, and service environments, this cordless LED tripod work light delivers powerful wide-area illumination for demanding tasks. The adjustable tripod stand extends for elevated lighting coverage while remaining compact for transport and storage. High-output LEDs provide bright, consistent light to illuminate large work areas, job sites, and outdoor projects. Multiple brightness settings allow users to adapt light output for different tasks and conditions. With durable jobsite construction, cordless battery compatibility, and stable tripod support, this light provides dependable lighting for construction, maintenance, and emergency applications.

CORDLESS LED TRIPOD WORK LIGHT - 10,000LM

- **10,000 Lumen Output:** High-output LED provides strong worksite lighting with 5500-6000K daylight colour temperature.
- **COB LED Light Source:** Produces wide, even illumination for work areas, garages, and jobsite tasks.
- **4 Lighting Modes:** High, Medium, Low, and Turbo mode for adjustable brightness based on the task.
- **Multi-Brand Battery Compatibility:** Works with most third-party 18V-20V batteries including DeWalt®, Milwaukee®, Makita®, Bosch®, Metabo HPT®, and RIDGID® (adapters included). No sponsorship or affiliation with third party brands suggested or implied.
- **Adjustable Tripod Stand:** Extends up to 5 ft for elevated lighting coverage across work areas.
- **Foldable Design:** Collapses to 40 in for easier storage and transport between jobsites.
- **Durable Construction:** PC, ABS, and aluminum housing built for workshop and jobsite environments.

L002924 1/2
CASE



MULTI
18V - 20V **BATTERY**
COMPATIBLE

ADAPTERS INCLUDED

MILWAUKEE	DEWALT
BOSCH	MAKITA
METABO HPT	RIDGID





**ROTATABLE COB LED CORDLESS WORK LIGHT-
5,000LM**

- **Worksite Applications:** Suitable for worksites, garages, outdoor tasks, and emergency lighting.
- **Multi-Brand Battery Compatibility:** Works with most third-party 18V-20V batteries including DeWalt®, Milwaukee®, Makita®, Bosch®, Metabo HPT®, and RIDGID® (adapters included). No sponsorship or affiliation with third party brands suggested or implied.
- **Adjustable Light Panels:** Center panel rotates 180°. Side panels adjust 360° vertically and 180° horizontally for directional lighting coverage.
- **Tripod Mount Compatible:** Threaded base allows secure mounting on a tripod stand (tripod not included).



L002922

1/12
CASE

MULTI BATTERY
18V - 20V COMPATIBLE

ADAPTERS INCLUDED



LED CORDLESS WORK LIGHT - 3,000 LM

- **Worksite Applications:** Suitable for worksites, garages, outdoor tasks, emergencies, and roadside assistance.
- **Multi-Brand Battery Compatibility:** Works with most third-party 18V-20V batteries including DeWalt®, Milwaukee®, Makita®, Bosch®, Metabo HPT®, and RIDGID® (adapters included). No sponsorship or affiliation with third party brands suggested or implied.
- **3 Brightness Levels:** High, Medium, and Low settings deliver up to 3000 lumens with 6000K daylight color temperature for clear illumination.
- **Lightweight Durable Housing:** ABS construction designed for portability and everyday jobsite use.
- **USB Output Port:** Built-in 5V / 1A USB port allows charging of phones and small devices.



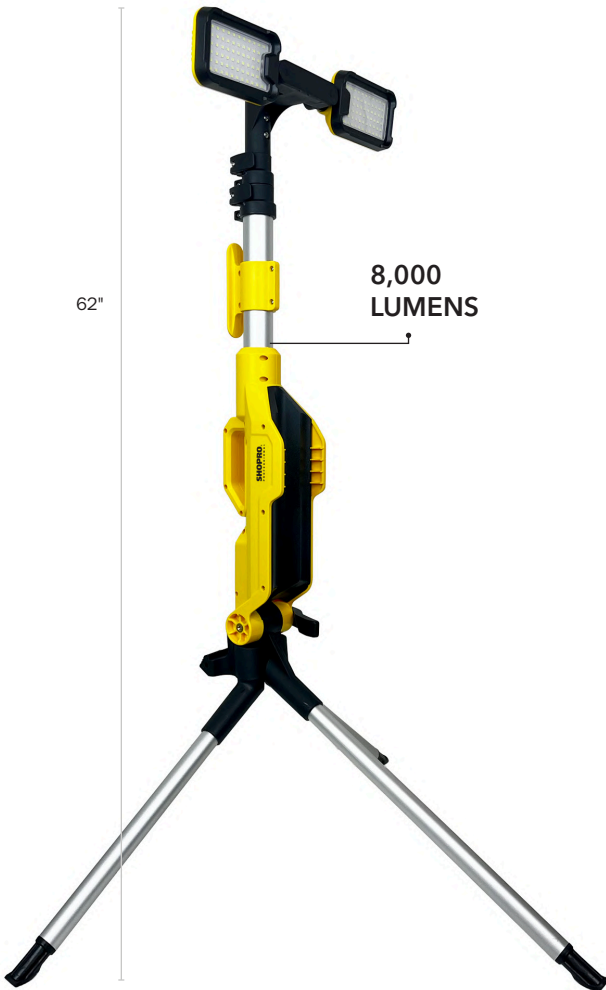
L002920

1/12
CASE

MULTI BATTERY
18V - 20V COMPATIBLE

ADAPTERS INCLUDED





Built for demanding jobsites, workshops, and outdoor work areas, the DualBeam Compact Rechargeable LED Work Light delivers powerful, adjustable illumination wherever you need it. Dual LED panels and an extendable tripod provide wide, targeted lighting coverage, while the rechargeable battery and USB charging capability offer dependable portable power. Rugged construction and compact folding design make it an ideal lighting solution for professionals, contractors, and emergency use.

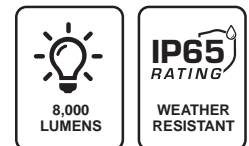
NEW

DUALBEAM COMPACT RECHARGEABLE LED WORK LIGHT - 8,000LM

- **High Output Illumination:** Produces up to 8000 lumens with selectable 100% and 30% brightness modes, plus flash mode for emergency visibility.
- **Long Beam Distance:** Bright LED output projects light up to 394 ft (120 m) for large work areas and outdoor use.
- **Dual Adjustable Light Heads:** Two independently adjustable LED panels provide wide coverage and allow light to be directed where needed.
- **Extendable Tripod Stand:** Adjustable tripod raises the light up to 5.2 ft (1.59 m) for elevated lighting and improved jobsite coverage.
- **Rechargeable Lithium Battery:** 4000mAh 18650 battery provides cordless operation with USB-C charging input.
- **Power Bank Function:** Integrated USB output ports allow charging of phones and other small devices on site.
- **Durable Construction:** PA66 housing with aluminum components built for regular jobsite use with IK07 impact resistance.
- **Weather Resistant:** IP65 rated protection helps keep dust and water spray out during outdoor work.
- **Portable Folding Design:** Tripod folds for transport and storage. Carry case included.
- **Compact Storage Size:** Folds down to approximately 27.5 in (69.8 cm) long for easier transport and storage.



L002960 1/4
CASE



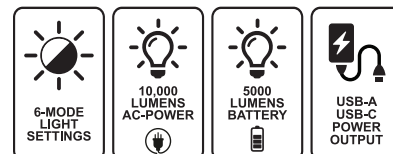
Designed for worksites, workshops, garages, and emergency situations, portable LED work lights provide bright, adjustable illumination wherever you need it. With dual power options, long-lasting battery life, and built-in USB charging, these lights offer unmatched convenience for both professional and personal use. Featuring rugged, weather-resistant construction, versatile mounting options, and customizable brightness levels, they deliver efficient, high-performance lighting for any job



**HYBRID LED TRIPOD
WORK LIGHT - 10,000LM**

- Perfect for construction sites, workshops, warehouses, industrial job sites, outdoor events, and emergency lighting
- **6-Light Modes:** Easily adjust between six brightness levels, delivering up to a max 10,000 lumens on AC power or 5,000 lumens max on battery.
- **Ultra-Bright & Wide-Area Coverage:** Delivers 10,000 lumens with two rotatable light heads, illuminating up to 2,150 sq. ft. (200m²) with 5500/6500K daylight brightness.
- **Dual Power Flexibility:** Runs on 120V AC mains power (100-240V, 50-60Hz, 90W) or a 16V 5200mAh rechargeable Lithium battery (40W).
- **Rechargeable & Long-Lasting:** Up to 2 hours of runtime on battery power and fully recharges in 3 hours for quick turnaround.
- **Compact & Adjustable:** Collapsible design folds to 35" x 7.5" x 4.5" and extends up to 7.5 feet for optimal lighting.
- **USB Power Output:** Features USB-A and USB-C output ports, allowing you to charge other portable devices directly from the light.
- 1.5m 16AWG cord, Type-C cable and Carrying bag included.

L002916 1/1
CASE





Designed for construction sites, road work, and large work areas, this balloon LED work light delivers powerful, uniform illumination with a high-output 20,000-lumen performance. The balloon diffuser provides soft, glare-free 360° lighting that reduces harsh shadows and improves visibility for crews working at night or in low-light conditions.

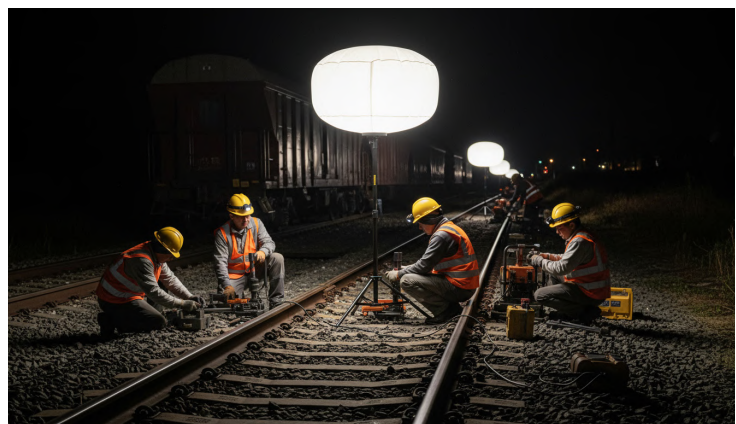
Mounted on an adjustable tripod stand for stable placement and elevated coverage, the light sets up quickly and provides reliable illumination across wide jobsite zones. Built for demanding environments with IP54 protection, it offers dependable lighting for contractors, emergency crews, industrial maintenance, and temporary outdoor work areas.

NEW

SITETOWER BALLOON LED WORK LIGHT WITH TRIPOD - 20,000LM

- **20,000 Lumen Output:** High-output LED lighting delivers wide-area illumination for large worksites and job areas.
- **Balloon Diffuser Light:** Provides soft, glare-free 360° illumination for even light distribution and reduced shadows.
- **High-Efficiency LED System:** SMD LEDs with RA >80 color rendering for accurate visibility and detail.
- **Adjustable Tripod Stand:** Heavy-duty tripod extends up to 1.5 m (5 ft) for elevated lighting coverage.
- **Durable Jobsite Construction:** Built for demanding work environments and frequent transport.
- **IP54 Rated Protection:** Dust and water resistance suitable for outdoor and jobsite use.
- **120V Plug-and-Play Power:** Standard 120V / 60Hz input with 3 m (10 ft) power cord included.
- **6500K Daylight Color Temperature:** Bright white light improves visibility for work areas and night operations.

L002945 1/2
CASE





**13,000 LUMENS LED
CONSTRUCTION WORK LIGHT**

- **Heavy-Duty Worksite Lighting:** Perfect for construction sites, workshops, garages, and indoor/outdoor job applications.
- **Ultra-Bright Performance:** Delivers up to 13,000 lumens with a 5000K daylight color temperature and 130LM/W efficacy for crisp, natural illumination.
- **Reliable Power Input:** Operates on AC100-277V, 50-60Hz for consistent, high-output lighting.
- **Daisy-Chain Capable:** Connect up to 9 lights (L002675) or 7 lights (L002676) for extended coverage across large areas.
- **Durable & Weather-Resistant:** IP64-rated construction withstands dust, splashes, and tough worksite conditions.
- **Portable & Practical Design:** Includes a foldable handle for easy carrying and storage, plus a 10' 16/3 SJTW cable for extended reach.

L002675 1/4
CASE



**19,500 LUMENS LED
CONSTRUCTION WORK LIGHT**

- **Heavy-Duty Worksite Lighting:** Perfect for construction sites, workshops, garages, and indoor/outdoor job applications.
- **Ultra-Bright Performance:** Delivers up to 19,500 lumens with a 5000K daylight color temperature and 130LM/W efficacy for crisp, natural illumination.
- **Reliable Power Input:** Operates on AC100-277V, 50-60Hz for consistent, high-output lighting.
- **Daisy-Chain Capable:** Connect up to 9 lights (L002675) or 7 lights (L002676) for extended coverage across large areas.
- **Durable & Weather-Resistant:** IP64-rated construction withstands dust, splashes, and tough worksite conditions.
- **Portable & Practical Design:** Includes a foldable handle for easy carrying and storage, plus a 10' 16/3 SJTW cable for extended reach.

L002676 1/4
CASE





Designed for worksites, garages, workshops, and service environments, this rechargeable LED inspection light delivers bright, focused illumination for detailed tasks and tight workspaces. The flexible multi-position design allows the light to be used handheld, magnetically mounted, or positioned exactly where illumination is needed. Dual light sources provide both wide flood lighting and focused spot lighting for inspection and repair work. With rechargeable battery power, adjustable lighting modes, and durable jobsite construction, it provides reliable lighting for maintenance, inspection, and service applications.

NEW

RECHARGEABLE LED SERVICE INSPECTION LIGHT PRO

- **1,200 Lumen Output:** COB + LED light sources provide bright flood and focused inspection lighting.
- **Dual Light Source:** COB flood light and LED spot light for wide-area or directional illumination.
- **12in Flexible Gooseneck:** Adjustable neck allows precise light positioning in tight or hard-to-reach spaces.
- **Rechargeable Lithium Battery:** 4000mAh battery provides extended runtime for inspections and service work.
- **3 Selectable Color Temperatures:** Adjustable light tones for different work environments and visibility needs.
- **Magnetic Base:** Built-in dual magnets allow hands-free use on metal surfaces.
- **USB-C Charging:** Type-C input (5V / 2A) with charging cable included.
- **Durable Housing:** Aluminum and rubber construction with IK07 impact resistance.
- **Lightweight Design:** Approximately 300 g for easy carrying and handling during inspections.
- **IPX3 Weather Resistance:** Protection against light splashes for workshop and outdoor use.



L002980

1/40
CASE



1,200
LUMENS



MAGNETIC
BASE



USB-C
CHARGING



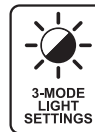
COB + LED
LIGHT



4-IN-1 LED CLAMP WORK LIGHT

- **3000 Lumen Output:** Three brightness levels with adjustable 2700K-6500K color temperature for task or ambient lighting.
- **Dual Power Operation:** Runs on a 7.4V 5000mAh Li-Ion battery or 120V AC power for continuous use.
- **Integrated Power Bank:** USB output allows charging of phones and small electronic devices.
- **Flexible Mounting Options:** Includes heavy-duty clamp, strong magnet, hanging hook, and 360° swivel head for versatile positioning.
- **Fast Charging:** USB-C charging (approx. 4 hrs) or AC charging (approx. 3 hrs) with 1.5 m extension cord included.
- **Durable Metal Housing:** Rugged construction built for workshop, garage, and jobsite environments.
- **Compact Folding Design:** Folds for storage and transport while maintaining stable positioning during use.

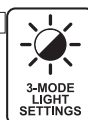
L002690 1/8
CASE



PORTABLE LED MULTIFUNCTION WORK LIGHT

- **3000 Lumen Output:** Three brightness levels (3000 / 1500 / 750 LM) with 5000K daylight color temperature for clear work lighting.
- **Durable Weather-Resistant Housing:** ABS construction with heat dissipation; dust- and splash-resistant for jobsite environments.
- **USB Charging Port:** Integrated 5V / 2A USB output for charging phones and small devices.
- **Long Runtime Battery:** Up to 8 hours of operation with approximately 4-hour recharge time.
- **Compact Portable Design:** Easy to carry for worksites, garages, outdoor tasks, and roadside assistance.

L002692 1/10
CASE





10,000 LUMENS ELITE LED WORK LIGHT

- **High Output LED Lighting:** Model L002682 delivers 10,000 lumens (70W) and Model L002680 delivers 6,500 lumens (48W) with 5000K daylight color temperature for clear worksite visibility.
- **Durable Weather-Resistant Construction:** Die-cast aluminum housing with protective coating and impact-resistant glass lens.
- **Efficient Heat Dissipation:** Rear fin-type heat sink improves cooling performance, keeping the unit cooler during extended operation.
- **Adjustable Light Positioning:** 360° vertical rotation and 90° tilt with quick-adjust angle knobs for precise lighting direction.
- **120V Power Connection:** 5 ft power cord with integrated AC outlet allows daisy-chaining up to 8 units for expanded lighting coverage.
- **USB-C Charging Port:** Built-in USB-C port provides convenient charging for mobile devices on the jobsite.

L002682 1/6 CASE

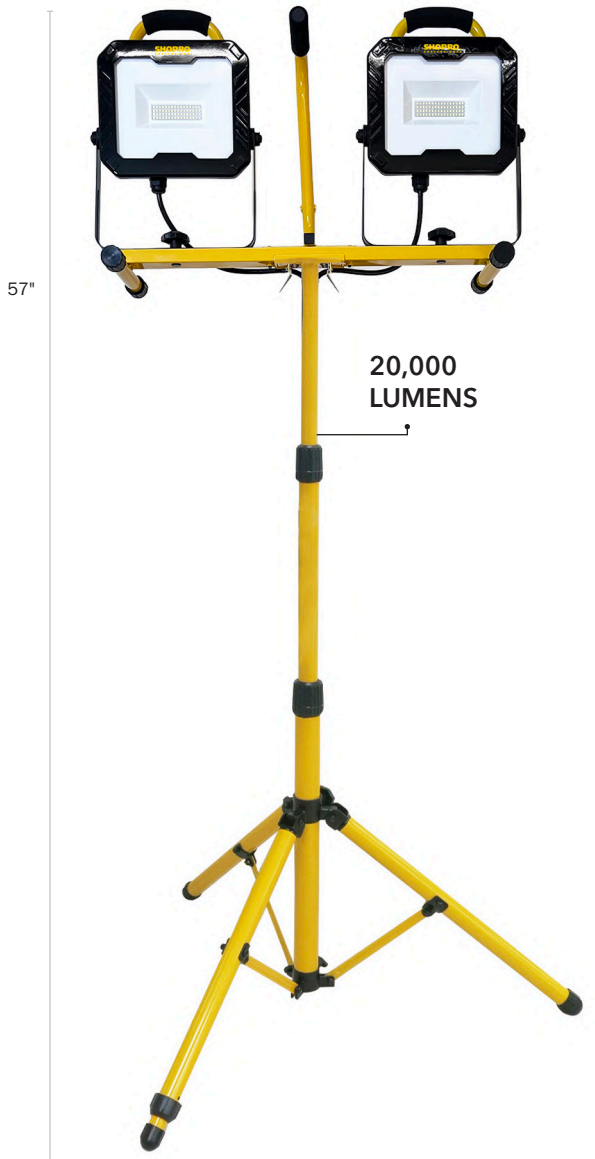


6,500 LUMENS LITE LED WORK LIGHT

- **High Output LED Lighting:** Model L002682 delivers 10,000 lumens (70W) and Model L002680 delivers 6,500 lumens (48W) with 5000K daylight color temperature for clear worksite visibility.
- **Durable Weather-Resistant Construction:** Die-cast aluminum housing with protective coating and impact-resistant glass lens for demanding jobsite environments.
- **Efficient Heat Dissipation:** Rear fin-type heat sink improves cooling performance, keeping the unit cooler during extended operation.
- **Adjustable Light Positioning:** 360° vertical rotation and 90° tilt with quick-adjust angle knobs for precise lighting direction.
- **120V Power Connection:** 5 ft power cord with integrated AC outlet allows daisy-chaining up to 8 units for expanded lighting coverage.
- **USB-C Charging Port:** Built-in USB-C port provides convenient charging for mobile devices on the jobsite.

L002680 1/6 CASE

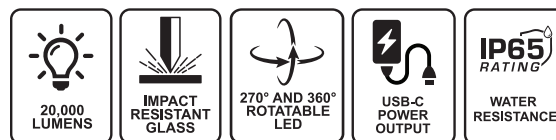




Designed for construction sites, warehouses, and large outdoor work areas, this high-output LED work light delivers powerful 20,000-lumen illumination with a 5000K daylight color temperature for clear visibility across wide jobsite areas. Adjustable light heads provide flexible coverage with 360° horizontal and 270° vertical rotation, and can be detached for independent use when needed. Mounted on a quick-adjust tripod stand, the light can be positioned from low task lighting to elevated area coverage. Built with a rugged die-cast aluminum housing, impact-resistant glass lens, and IP65-rated protection, it provides reliable performance for demanding worksites, emergency response, industrial maintenance, and temporary outdoor lighting.

20,000 LUMENS ELITE LED DUAL HEAD TRIPOD WORK LIGHT

- **20,000 Lumen Output:** High-output LED lighting with 5000K daylight color temperature for large work areas.
- **Adjustable Light Heads:** 360° horizontal and 270° vertical rotation with detachable heads for independent use.
- **Adjustable Tripod Stand:** Quick-release tripod extends from 1.9 ft to 4.8 ft for flexible lighting coverage.
- **Heavy-Duty Construction:** Die-cast aluminum housing with impact-resistant glass lens and polyester powder-coat finish.
- **IP65 Rated Protection:** Dust-tight and water-resistant for demanding jobsite environments.
- **120V Power Connection:** 5 ft power cord with integrated AC outlet allows daisy-chaining up to 8 units.
- **USB-C Charging Port:** Built-in USB-C port for charging mobile devices and small electronics.
- **2.5kV Surge Protection:** Integrated protection helps safeguard connected equipment from voltage spikes.



L002686 1/2
CASE





PORTABLE LED WORK LIGHT - 10W/900LM

- 30,000 Hours super bright LED life
- CCT: 6500K
- IP65 Rating weather resistant
- Sealed die cast aluminum housing
- Adjustable tilting head
- Cushioned carrying handle
- Impact resistant lens

L002800 1/20
CASE



LED SLIM WORK LIGHT - 20W/1,800LM

- 30,000 Hours super bright LED life
- CCT: 6500K
- IP65 Rating weather resistant
- Sealed die cast aluminum housing
- Adjustable tilting head
- Cushioned carrying handle
- Impact resistant lens

L002803 1/10
CASE



LED SLIM WORK LIGHT - 50W/4,500 LM

- 30,000 Hours super bright LED life
- CCT: 6500K
- IP65 Rating weather resistant
- Sealed die cast aluminum housing
- Adjustable tilting head
- Cushioned carrying handle
- Impact resistant lens

L002805 1/6
CASE





Designed for worksites, garages, workshops, and outdoor tasks, this portable LED work light delivers reliable illumination for demanding job environments. The adjustable tripod stand and tilting light head allow precise positioning to direct light exactly where it is needed. Built with a durable aluminum housing, impact-resistant lens, and IP65-rated protection, it provides dependable performance in tough conditions. With bright 6500K daylight output and long-lasting LED life, it is ideal for construction, maintenance, emergency use, and general jobsite lighting.

PORTABLE LED WORK LIGHT - 3,600LM

- **Weather-Resistant Protection:** IP65-rated construction helps protect against dust and water in demanding work environments.
- **Durable Aluminum Housing:** Sealed die-cast aluminum body provides strength and heat dissipation for extended LED performance.
- **Adjustable Lighting Angle:** Tilting head allows precise positioning to direct light exactly where it's needed.
- **Adjustable Tripod Stand:** Telescopic tripod extends up to 4 ft (1.2 m) to elevate lighting for wider work area coverage.
- **Quick Release Mounting System:** Bracket system allows fast setup and easy installation.
- **Impact-Resistant Lens:** Tough protective lens helps withstand impacts and rough jobsite conditions.
- **Comfortable Carrying Handle:** Cushioned handle improves grip and makes transporting the light easier on the jobsite.
- **Daylight Color Temperature:** 6500K CCT delivers crisp, clear illumination for detailed work and improved visibility.
- **Long LED Lifespan:** 30,000 hours of super-bright LED life for reliable long-term lighting.

L002810

1/2
CASE

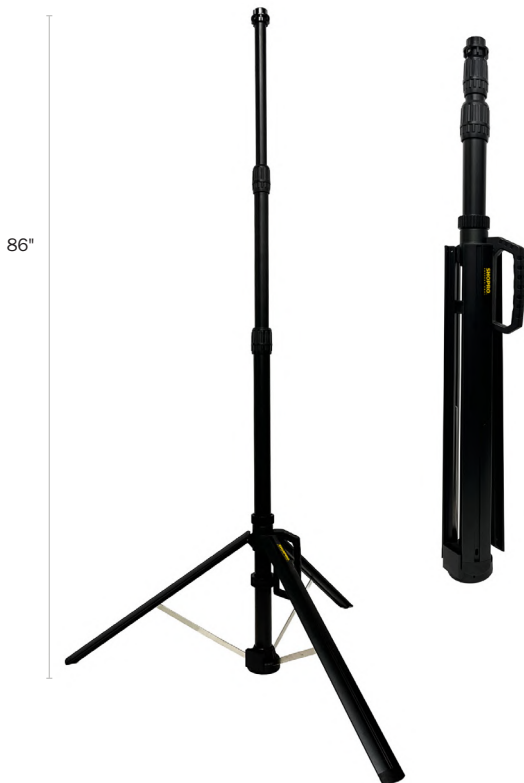




360 LED CANNON WORK LIGHT- 70W/8,000LM

- **High-Output 360° Illumination:** Produces up to 8,000 lumens for wide-area lighting coverage across jobsites, workshops, and work areas.
- **Heavy-Duty Power Performance:** Operates at 0.58A / 120V / 70W for consistent high-output lighting.
- **Impact-Resistant Lens:** High-impact lens design distributes soft, uniform light while protecting the LEDs in demanding environments.
- **Convenient Power Outlet:** On-board outlet allows connection of work devices or linking multiple lights together for expanded coverage.
- **Adjustable Vertical Flip Design:** Quickly sets up to a maximum height of 53 in. and folds down to 34 in. for easy transport and storage.
- **Secure Carry Handle:** Unique plastic-coated handle provides a firm, comfortable grip for moving the light between work areas.
- **Heavy-Duty Power Cord:** Equipped with 18/3 SJTW cable for reliable jobsite power connection.
- **Portable Jobsite Design:** Weighs 8.8 lbs (4 kg) for easy transport and repositioning.

L002910 1/2
CASE



NEW

ADJUSTABLE FLEXSTAND UNIVERSAL TRIPOD

- **Adjustable Height Stand:** Extends up to 7.2 ft (2.2 m) to elevate work lights for wider jobsite coverage.
- **Freestanding Tripod Base:** Three-leg base provides stable support on floors, jobsite surfaces, and uneven ground.
- **Universal Light Mount:** Compatible with a wide range of portable work lights using standard mounting threads.
- **Heavy-Duty Construction:** Aluminum legs with steel pipe and nylon components built for regular jobsite use.
- **Compact Folding Design:** Collapses to approximately 36.2 in (92 cm) for easier transport and storage.
- **Integrated Carry Handle:** Built-in handle allows easier transport between work areas.
- **Secure Transport Strap:** Strap keeps tripod legs together when folded to prevent accidental opening during transport.
- **Carry Case Included:** Protective carry bag helps protect the tripod during storage and transportation.

L002990 1/6
CASE



TROUBLE LIGHTS

- **Heavy-Duty Protective Cage:** Durable metal cage protects the bulb from impacts and jobsite damage.
- **Integrated Power Outlet & Switch:** Convenient on/off switch with built-in outlet on the handle allows powering additional devices.
- **Dual Hanging Hooks:** Two-way hook design provides flexible hanging options for hands-free lighting.
- **Durable Jobsite Cord:** Equipped with 16/3 SJT power cord for reliable performance in work environments.
- **High-Visibility Design:** Black handle with bright yellow cord improves visibility and handling on busy job sites.

7' TROUBLE LIGHT

L002726 1/20
CASE

20' TROUBLE LIGHT

L002728 1/15
CASE



500W HALOGEN WORK LIGHT- 50W/8,000 LUMENS

- **High-Output Halogen Lighting:** Produces 8,000 lumens with 500W power for bright illumination across work areas.
- **Durable Worksite Construction:** Aluminum body with impact-resistant glass lens and protective chrome guard for added durability.
- **Convenient Power Control:** Includes a 5 ft cord with integrated On/Off switch for easy operation.
- **Halogen Type-J Bulb Included:** Ready to use with a pre-installed halogen bulb for immediate setup.
- **Indoor Use Design:** Intended for dry work environments such as workshops, garages, and jobsite interiors.

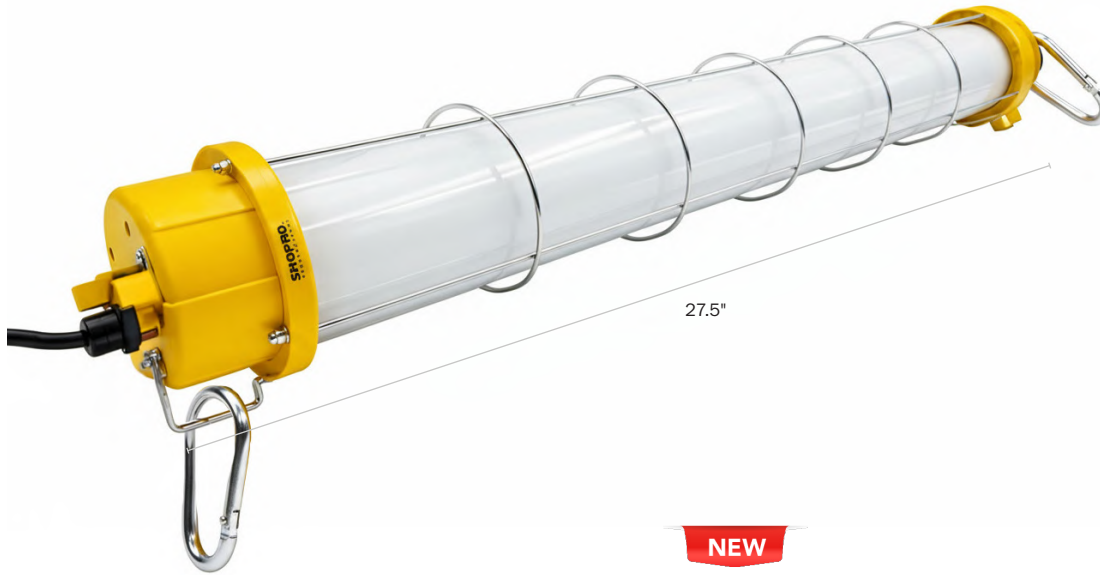
L002716 1/8
CASE



500 W TYPE-J QUARTZ HALOGEN BULB

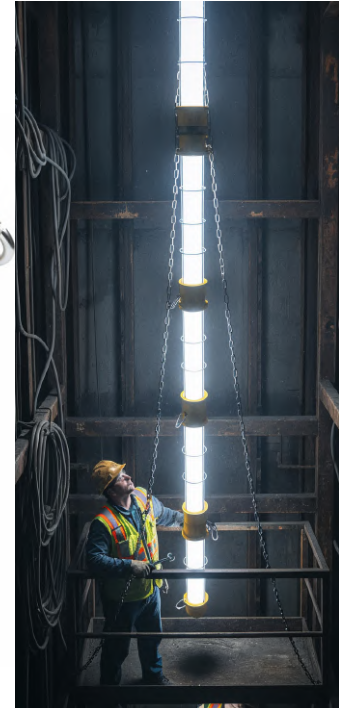
- **500W Quartz Halogen Bulb:** High-output replacement bulb designed for bright halogen work lighting.
- **Standard 120V Operation:** Compatible with common 120V halogen work lights and fixtures.
- **Type-J Halogen Design:** Fits most halogen work lights, torchiere lamps, and compatible lighting fixtures.

B005415 10/200
CASE



27.5"

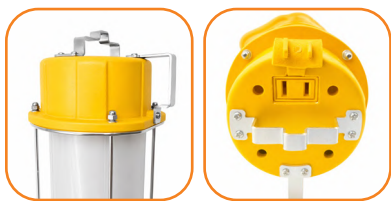
NEW



Designed for worksites, construction areas, and temporary jobsite setups, this high-output LED tube light delivers full 360° illumination for large work zones and enclosed spaces. The cylindrical design provides consistent, shadow-free lighting, while the linkable system allows multiple units to connect for expanded coverage. Built with a protective steel guard and weather-resistant housing, it holds up to demanding jobsite conditions. With flexible hanging options, plug-in power, and a portable tube design, this light offers reliable, adaptable lighting for construction, maintenance, and site work.

LINKABLE LED JOBSITE TUBE LIGHT - 7,200LM

- **High Output Lighting:** Produces up to 7200 lumens with selectable high (7200 lm) and low (3600 lm) brightness modes.
- **360° Area Illumination:** Cylindrical LED design provides uniform lighting in all directions for workspaces and enclosed areas.
- **Linkable Lighting System:** Connect up to 6 tube lights together for extended jobsite lighting coverage.
- **Flexible Hanging Installation:** Can be hung vertically or horizontally using the integrated metal hanging grid.
- **Heavy-Duty Protective Grid:** Steel guard helps protect the light during jobsite use.
- **Weather Resistant:** IP54 rated protection helps resist dust and water spray.
- **Jobsite Power Cord:** Includes 6 ft (1.8 m) power cord with 120V input (50-60Hz).
- **Portable Tube Design:** Lightweight tubular housing allows easy transport and setup.
- **Carry Bag Included:** Protective storage bag included for transport and storage.



L003001 1/4
CASE





Designed for worksites, temporary lighting, and large-area illumination, this double-sided LED strip light on reel delivers high-output, flexible lighting for demanding environments. The dual-sided LED design provides strong, uniform light coverage along the entire length, making it ideal for construction sites, workshops, and industrial setups. Built for durability and easy deployment, the reel design allows quick setup, transport, and storage, while weather-resistant construction ensures reliable performance indoors and outdoors.



DOUBLE-SIDED LED JOBSITE STRIP LIGHT REEL - 37,500LM

- **Dual-Sided High Output Lighting:** 1500-1600 lumens per meter with LEDs on both sides for maximum area coverage
- **81.25ft (25m) Reel Length:** Long continuous lighting run ideal for jobsite, tunnel, and temporary lighting setups
- **Linkable System:** Connect multiple reels for extended coverage across large work areas
- **Durable Jobsite Construction:** IP65 weather resistant and IK10 impact rated for harsh environments
- **High Efficiency Output:** 14-16 W/m delivers strong light with efficient power consumption
- **Industrial Power Setup:** 115V input with ballast system supports long-length operation (up to 50 m max)
- **Flexible Installation:** Can be unrolled, mounted, or suspended for temporary lighting applications
- **Heavy-Duty Connectors:** Waterproof male/female locking connectors ensure secure connections on site
- **Long Service Life:** Rated up to 30,000 hours for reduced maintenance and downtime

L003010 1/1
CASE

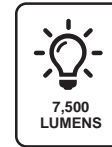




50' LED STRING WORK LIGHT-60W/7,500LM

- **7,500 Lumens Output:** Five high-intensity LED light heads provide wide jobsite illumination.
- **Protective Light Heads:** Each light includes a protective cage and carabiner hook for hanging and positioning.
- **50 ft String Coverage:** Five lights spaced along a 50 ft cord for large area lighting.
- **Daisy-Chain Capability:** Connect up to 10 sets together for expanded coverage.
- **IP65 Weather Resistance:** Suitable for damp locations and outdoor job sites.
- **16/3 SJTW Power Cord:** Heavy-duty cable rated for jobsite use.

L002771 1/4
CASE



50' LED STRING WORK LIGHTS- 60W/6,000LM

- **6,000 Lumens Output:** Five LED light heads provide wide work area illumination.
- **50 ft String Coverage:** Five lights spaced along a 50 ft cord for large area lighting.
- **Daisy-Chain Capability:** Connect up to 13 sets together for expanded coverage.
- **IP65 Weather Resistance:** Suitable for damp locations and outdoor job sites.
- **18/3 SJTW Power Cord:** Heavy-duty cable for jobsite use.
- **Carabiner Hanging Hooks:** Each light head includes a hook for quick mounting.

L002772 1/1
CASE





14/3 SJTW

LIGHT STRING PLASTIC CAGE

- **Jobsite Lighting Coverage:** Suitable for job sites, warehouses, marinas, and parking lots.
- **Heavy-Duty Power Cord:** 14/3 SJTW cable rated for demanding work environments.
- **High Capacity Power Rating:** 13A / 125V / 1625W electrical capacity for reliable jobsite power distribution.



50' - 5 PLASTIC CAGES

13A-125V-1625W

L002750 1/1
CASE

100' - 10 PLASTIC CAGES

13A-125V-1625W

L002755 1/1
CASE

12/3 SJTW

LIGHT STRING METAL CAGE

- **Jobsite Lighting Coverage:** Suitable for job sites, warehouses, marinas, and parking lots.
- **Heavy-Duty Power Cord:** 12/3 SJTW cable rated for demanding work environments.
- **High Capacity Power Rating:** 125V power capacity for reliable jobsite lighting setups.



50' - 5 METAL CAGES

13A-125V-1625W

L002757 1/1
CASE

100' - 10 METAL CAGES

13A-125V-1500W

L002759 1/1
CASE

