



AIR TOOLS AND ACCESSORIES

AIR COMPRESSORS

AIR HOSE

AIR FITTINGS/ACCESSORIES

AIR TOOLS

AIR BLOW GUNS

AIR NAILERS

AIR TOOL FASTENERS

TIRE TOOLS

AIR COMPRESSORS



AIR COMPRESSOR ULTRA QUIET 1.6 GAL

- Motor: 0.65 HP, 5.5 Amp, 110V / 60Hz
- CFM at 90 PSI: 1.3 CFM
- RPM: 1,400
- Weight: 15 kg / 33 lbs
- Low noise - only 48 dB
- Oil free, no maintenance needed
- Regulated pressure gauge
- Industrial M-Style coupler
- Metal air filter

Item #

10925



AIR COMPRESSOR 1 HP 2 GAL

- Motor: 1 HP, 8 Amp, 110V / 60 Hz
- Tank capacity: 2 Gal
- CFM at 90 PSI: 2.5 CFM
- RPM: 3,400
- Weight: 19 Kg / 42 lbs
- Direct drive oil lubricated pump
- Regulated pressure gauge
- Universal quick coupler
- Metal air filter

Item #

10930



AIR COMPRESSOR TWIN TANK 2 HP 4 GAL

- Motor: 2 HP, 11 Amp, 110 V/60 Hz
- Tank capacity: 4 Gal
- CFM at 90 PSI: 3.5 CFM
- RPM: 3,400
- Weight: 28 kg / 62 lb
- Direct drive oil lubricated pump
- Regulated pressure gauge
- Universal quick coupler
- Metal air filter

Item #

10934



AIR COMPRESSOR VERTICAL 2.5 HP 20 GAL

- Motor: 2.5 HP, 13 Amp, 110V / 60 Hz
- Tank capacity: 20 Gal
- CFM at 90 PSI: 4.0 CFM
- RPM: 3,400
- Weight: 46 kg / 101.5 lbs
- Direct drive oil lubricated pump
- Regulated pressure gauge
- 2 Industrial M-Style couplers
- Metal air filter
- Large 8" wheels for easy movement

Item #

10940

AIR HOSES



RETRACTABLE HYBRID AIR HOSES

- Kink resistant hybrid air hose
- All weather flexibility (-40 °C to 65 °C)
- Spring powered auto rewind mechanism
- Multi position ratcheting gear mechanism
- Maximum pressure: 300 PSI

Item #	Size
14117	3/8" x 25'
14118	3/8" x 50'



COIL AIR HOSES

- Spring ends with ultimate recoil memory
- Leak proof construction
- Swivel 1/4" M NPT
- Maximum pressure: 300 PSI

Item #	Size
14130	1/4" x 15'
14132	1/4" x 25'
14133	1/4" x 50'
14134	3/8" x 25'



1/4" X 100' SWIVEL AIR HOSE REEL

- Swivel base
- Crank wind up
- 1/4 x 100' Hybrid hose
- 1/4" Swivel NPT fittings
- Lightweight and easy to handle
- Extremely flexible, easy to coil
- Reinforced bend restrictors to prolong life of the hose
- Ideal for cold weather down to -40° C
- Maximum pressure: 300 PSI

Item #
14176



FLEXINATOR HYBRID AIR HOSES

- Kink resistant
- All weather flexibility (-40°C to 65°C)
- Lightweight, easy to handle
- Reinforced bend restrictors to prolong life of the hose
- Chemical and oil resistant
- Abrasion resistant outer cover
- Maximum pressure: 300 PSI

Item #	Size	Color	Item #	Size	Color
14186	1/4" x 25'	Blue	14184	3/8" x 50'	Green
14181	1/4" x 50'	Green	14182	1/4" x 100'	Green
14187	1/4" x 50'	Blue	14188	1/4" x 100'	Blue
14191	1/4" x 50'	Orange			



HYBRID AIR HOSES

- Lightweight and easy to handle
- Extremely flexible, easy to coil
- Lays flat
- Kink resistant
- Reinforced bend restrictors to prolong life of the hose
- Ideal for cold weather down to -40° C
- Maximum pressure: 300 PSI

Item #	Size
14169	1/4" x 25'
14170	1/4" x 50'
14172	3/8" x 50'



1/4" X 100' FLEXINATOR PU HYBRID AIR HOSE CLEAR

- All weather flexibility (-40 °C to 65 °C)
- Lightweight, 40% lighter than rubber hose
- Extremely durable and flexible
- Zero memory, lays flat and is easy to coil
- Kink resistant
- Abrasion resistant outer cover
- Reinforced bend restrictors to prolong life of the hose
- 1/4" NPT fittings
- Maximum pressure: 300 PSI

Item #
14198

AIR FITTINGS/ACCESSORIES



2 PC INDUSTRIAL M-STYLE PLUGS

- Industrial M-Style Plug
- For connecting pneumatic system components
- Brass

Item #	Size
14905	1/4" M
14906	1/4" F

2 PC INDUSTRIAL M-STYLE PLUGS

- Industrial M-Style Plug
- For connecting pneumatic system components
- Steel

Item #	Size
14910	1/4" M
14911	1/4" F
14912	3/8" M



1/4" M NPT SWIVEL PLUG

- Provides free 360° rotation with a 45° angled rotation
- For connecting pneumatic system components
- Steel

Item #
14231

INDUSTRIAL M-STYLE COUPLERS

- Industrial M-Style Coupler
- For connecting pneumatic system components
- Brass

Item #	Size
14907	1/4" M
14908	1/4" F



INDUSTRIAL M-STYLE COUPLERS

- Industrial M-Style Coupler
- For connecting pneumatic system components
- Brass

Item #	Size
14915	1/4" M
14916	1/4" F
14917	3/8" M



3 PC M-STYLE PLUG & COUPLER SET

- Ideal for quickly connecting air tools
- Includes: 1/4" NPT female thread quick coupler, 1/4" NPT male thread connector, 1/4" NPT female thread connector

Item #

14920



5 PC M-STYLE PLUG & COUPLER SET

- Ideal for quickly connecting air tools
- Includes: 1/4" NPT female thread quick coupler, 1/4" NPT male thread connector - 3 PC, 1/4" NPT female thread connector

Item #

14921



17 PC M-STYLE AIR ACCESSORY SET

- Ideal for inflating and checking tire pressure, blowing debris and quickly connecting air tools
- Includes: air blow gun, tire gauge, dual head tire chuck, blow gun adapter, safety nozzle, coupler, tapered inflation needle, 1/4" NPT female industrial M-Style - 2PC, 1/4" NPT male industrial M-Style - 4 PC, 1/4" NPT female industrial M-Style coupler, 1/4" F NPT Coupling, 1/4" NPT male nipples - 2 PC, Inflation needle

Item #

14923



21 PC M-STYLE AIR ACCESSORY SET

- Ideal for inflating and checking tire pressure, blowing debris and quickly connecting air tools
- Includes: coil hose 1/4" x 25', tire gauge 10-100 PSI, tapered nozzle, blow gun adapter, 1/4" M NPT Nipples, dual head tire chuck, air blow gun, blow gun nozzle, seal tape, 1/4" F NPT coupling, tapered inflation needle, 1/4" F NPT plugs - 2 PC, 1/4" M NPT Plugs - 3 PC, 1/4" F NPT steel couplers - 2 PC, inflation needles - 3PC

Item #

14925



SWIVEL AIR LINE SPLITTER

- 2 Industrial M-Style couplers
- Couplers swivel 360°, reduces twisting of the air hose
- 1/4" F NPT mount

Item #

14927

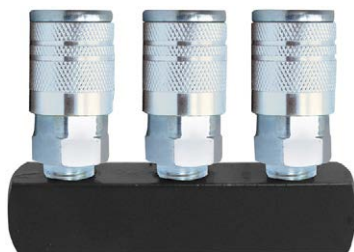


3-IN-1 AIR MANIFOLD

- Connect from one outlet to three outlets
- 1/4" NPT

Item #

14028



MANIFOLD STRAIGHT WITH 3 COUPLERS

- 3 Industrial M-Style couplers
- 1/4" F NPT mount

Item #

14928



MANIFOLD ROUND WITH 3 COUPLERS

- 3 Industrial M-Style couplers
- 1/4" NPT female mount

Item #

14929



3/8" AUTO TRU-FLATE® PLUG

- 3/8" Auto Truflate® plug
- For connecting pneumatic system components
- Steel

Item #	Size	Item #	Size
14930	1/4" M	14932	3/8" M
14931	1/4" F	14933	3/8" F



3/8" AUTO TRU-FLATE® COUPLER

- 3/8" Auto Truflate® coupler
- For connecting pneumatic system components
- Steel

Item #	Size	Item #	Size
14935	1/4" M	14937	3/8" M
14936	1/4" F	14938	3/8" F



5 PC 3/8" AUTO TRU-FLATE® SET

- Ideal for quickly connecting air tools
- Includes: 1/4"- NPT female thread quick coupler, 1/4"- NPT male thread connector - 3 PC, 1/4"- NPT female thread connector

Item #

14940



2 PC ARO® STYLE PLUG

- ARO® Style plug
- For connecting pneumatic system components
- Steel

Item #	Size
14950	1/4" M
14951	1/4" F



ARO® STYLE COUPLER - 1/4" FEMALE

- Coupler ARO® Style
- For connecting pneumatic system components
- Steel

Item #
14952

2 PC AUTO TRU-FLATE® STYLE PLUG

- Plug Auto Tru-Flate®
- For connecting pneumatic system components
- Steel

Item #	Size
14960	1/4" M
14961	1/4" F



AUTO TRU-FLATE® STYLE COUPLER - 1/4" FEMALE

- Coupler Auto Tru-Flate®
- For connecting pneumatic system components
- Steel

Item #
14962

UNIVERSAL COUPLER - 1/4" FEMALE

- 3 in 1 Universal coupler
- Works with Industrial M-Style, 1/4" Aro and 1/4" Truflate® plugs
- Steel

Item #
14970



IN-LINE AIR LUBRICATOR

- Lubricator adds oil to ensure proper tool operation
- Attach between air hose and tool
- Clear body
- 1/4" NPT

Item #
13905

IN-LINE AIR FILTER

- Keeps damaging oil and water out of air supply
- Attaches in the airline between air supply and tool
- Clear body
- 1/4" NPT

Item #
13907



AIR LUBRICATOR 1/4" NPT

- Industrial quality
- Lubricator adds oil to ensure proper tool operation
- Polycarbonate bowl with metal protector
- Maximum pressure: 140 PSI
- Air Inlet: 1/4 NPT
- Maximum flow rate: 140 CFM

Item #
13927



AIR FILTERS

- Industrial quality
- Maximum pressure: 140 PSI
- Maximum flow rate: 140 CFM

Item #	Air Inlet
13926	1/4" NPT
13932	1/2" NPT



AIR FILTERS AND REGULATORS

- Industrial quality
- Regulator allows control of air pressure from 7 to 120 PSI
- Filter protects air tools from damage caused by rust and moisture
- Polycarbonate bowl with metal protector

Item #	Air Inlet	Max. Pressure	Max. Flow Rate
13928	1/4" NPT	140 PSI	140 CFM
13934	1/2" NPT	140 PSI	140 CFM
13937	3/4" NPT	140 PSI	140 CFM



AIR FILTER, REGULATOR AND LUBRICATOR 1/2" NPT

- Industrial quality
- Regulator allows control of air pressure from 7 to 120 PSI
- Filter protects air tools from damage caused by rust and moisture
- Lubricator adds oil to ensure proper tool operation
- Polycarbonate bowl with metal protector

Item #	Air Inlet	Max. Pressure	Max. Flow Rate
13935	1/2" NPT	140 PSI	140 CFM



HIGH PRESSURE AIR FILTER AND REGULATOR 1/2"

- Industrial quality
- Regulator allows control of air pressure from 7 to 176 PSI
- Regulator allows control of air pressure
- Filter protects air tools from damage caused by rust and moisture
- Polycarbonate bowl with metal protector

Item #	Air Inlet	Max. Pressure	Max. Flow Rate
13944	1/2" NPT	230 PSI	140 CFM



AIR FILTER & REGULATOR MINI 1/4" NPT

- Compact sized for smaller areas
- Regulator allows control of air pressure from 7 to 120 PSI
- Filter protects air tools from damage caused by rust and moisture

Item #	Air Inlet	Max. Pressure	Max. Flow Rate
13923	1/4" NPT	140 PSI	70 CFM



AIR FILTER & REGULATOR 1/4" NPT

- Regulator allows control of air pressure from 0 to 120 PSI
- Filter protects air tools from damage caused by rust and moisture
- Auto drain
- Polycarbonate bowl with metal protector

Item #	Air Inlet	Max. Pressure	Max. Flow Rate
13914	1/4" NPT	140 PSI	60 CFM



AIR FILTER

- Protects air tools from damage caused by rust and moisture
- Air inlet: 1/4" NPT
- Maximum pressure: 140 PSI
- Maximum flow rate: 60 CFM

Item #	Air Inlet	Max. Pressure	Max. Flow Rate
13912	1/4" NPT	140 PSI	60 CFM



AIR REGULATOR WITH GAUGE 1/4" NPT

- Diaphragm regulator allows control of air pressure from 0 to 120 PSI
- Gauge can be mounted on either side of regulator

Item #	Air Inlet	Max. Pressure	Max. Flow Rate
13910	1/4" NPT	140 PSI	140 CFM



AIR REGULATOR WITH GAUGE - BRASS

- Air restriction with gauge (0-150 PSI)
- 1/4" NPT
- Brass fitting

Item #
14001



AIR REGULATOR WITH GAUGE 1/4" NPT

- Provides fine air control for air tools and spray guns
- Diaphragm regulator allows control of air pressure from 0 to 125 PSI
- Air inlet: 1/4" NPT (F)
- Pressure gauge port: 1/8" NPT (F)
- Gauge can be mounted on either side of regulator
- Mounting bracket included

Item #
14005



GAUGES

- Back-mount
- 0 to 150 PSI

Item #	Size
13960	1-1/2", 1/8" NPT
13962	1-1/2", 1/4" NPT
13964	2", 1/4" NPT



AIR SPRAY GUN REGULATOR WITH GAUGE

- Adjusts airflow at the spray gun
- Gauge indicates pressure at gun
- Adjustment range: 0 to 125 PSI
- 1/4" NPT

Item #
14301



2 PC REDUCERS

- One piece solid brass construction
- Resistant to corrosion

Item #	Size
14244	1/4" M - 3/8" F NPT
14262	1/4" F x 3/8" F NPT
14264	1/4" F x 1/2" F NPT
14266	3/8" F x 1/2" F NPT



2 PC BUSHINGS

- One piece solid brass construction
- Resistant to corrosion

Item #	Size
14246	1/4" M - 1/8" F NPT
14248	3/8" M - 1/4" F NPT
14250	1/2" M - 1/4" F NPT
14252	1/2" M - 3/8" F NPT



2 PC HOSE MENDERS

- One piece solid brass construction
- Resistant to corrosion

Item #	Barb Size
14254	1/4"
14256	3/8"



2 PC HOSE BARBS

- One piece solid brass construction
- Resistant to corrosion

Item #	Barb Size	Item #	Barb Size
14268	1/4" M - 1/4" Barb	14272	3/8" M - 1/4" Barb
14276	1/4" F - 1/4" Barb	14280	3/8" F - 1/4" Barb
14270	1/4" M - 3/8" Barb	14274	3/8" M - 3/8" Barb
14278	1/4" F - 3/8" Barb	14282	3/8" F - 3/8" Barb



2 PC HOSE CLAMP

- Provide a permanent clamp for replacing hose end or mends

Item #	Size
14297	1/4"
14298	3/8"



2 PC COUPLINGS

- One piece solid steel construction with zinc plating for surface protection

Item #	Size
14258	1/4" F NPT
14260	3/8" F NPT



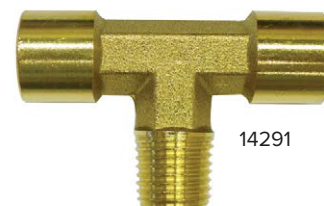
ELBOWS

- One piece solid steel (14291, 14292) or brass (14291) construction
- Resistant to corrosion

Item #	Size
14286	1/4" F NPT
14288	3/8" F NPT



14290 & 14292



14291

TEE

Item #	Size
14290	1/4" F NPT
14292	3/8" F NPT
14291	1/4" M x 1/4" F x 1/4" M NPT



2 PC 1/4" DRAIN VALVE

- 1/4" M NPT
- One piece solid brass construction
- Resistant to corrosion

Item #
14284



2 PC NIPPLE HEX

- One piece solid brass construction
- Resistant to corrosion

Item #	Size
14240	1/4" M NPT
14243	1/4" x 3/8" NPT
14242	3/8" M NPT



BALL VALVES

- Allows quick and easy air shut-off
- Steel ball with Teflon seals for long life

Item #	Size
14294	1/4" F NPT
14295	3/8" F NPT



3/8" AIR SHUT OFF KIT

- Allows quick and easy air shut-off
- Steel ball with Teflon seals for long life
- 3/8" NPT thread Size
- Includes: 3/8" NPT nipple and 3/4" NPT to 3/8" NPT reducer

Item #
14299



1/4" SAFETY VALVE

- 1/4" NPT
- Maximum pressure: 140 PSI

Item #
14293



HOSE REPAIR KITS

- Use to repair 1/4" inside diameter hose
- Includes: 1 x 1/4" hose mender, 1 x 1/4" hose barb 1/4" NPT, 3 x hose clamps

Item #	Size
14237	1/4"
14238	3/8"



AIR HOSE SWIVEL CONNECTOR 1/4" NPT

- 1/4" NPT
- 360° Rotation
- 90° Inlet to outlet

Item #
14020



AIR HOSE DUAL SWIVEL CONNECTOR 1/4" NPT

- 360° Rotation

Item #
14022

AIR TOOLS



1/2" IMPACT WRENCH

- Ideal for most automotive applications
- Ball type retainer for positive socket retention
- 230 ft / lb maximum torque
- Specifications:
 - Free speed: 7,000 RPM
 - Average air consumption: 4 CFM
 - Length: 7.12"
 - Weight: 4.8 lbs

Item #

17015



1/2" HEAVY DUTY IMPACT WRENCH

- Heavy Duty, ideal for automotive and farm applications
- Powerful twin hammer mechanism
- High torque allows fast removal of stubborn bolts
- Built-in regulator
- 400 ft/lb Maximum torque
- Specifications
 - Free speed: 7,000 RPM
 - Average air consumption: 4 CFM
 - Length: 7.36"
 - Net weight: 5.8 lbs

Item #

17018



1/4" MINI AIR DIE GRINDER

- Compact design for easy operation
- Ideal for grinding, deburring and polishing metal components
- Rear exhaust

Item #

17020





1/4" AIR DIE GRINDER

- Compact and lightweight
- Ideal for grinding, deburring and polishing metal components
- Rear exhaust
- Specifications:
 - Free speed: 22,000 RPM
 - Average air consumption: 4 CFM
 - Length: 6.77"
 - Net weight: 1.25 lbs

Item #

17022



1/4" AIR ANGLE DIE GRINDER

- Angle head provides easy access into tight spaces
- Ideal for grinding, deburring and polishing metal components
- Rear exhaust
- Specifications:
 - Collet size: 1/4"
 - Free speed: 20,000 RPM
 - Average air consumption: 2.8 CFM
 - Length: 6.18"
 - Net weight: 1.08 lbs

Item #

17027



15 PC 1/4" AIR DIE GRINDER KIT

- Kit Includes: 17022 air die grinder, 5 PC 1/4" mounted grinding stone, 5 pc 1/8" mounted grinding stone, 1/8" and 1/4" collet, air plug
- Ideal for grinding, deburring and polishing metal compounds
- Compact and lightweight
- Rear Exhaust
- Specifications:
 - Collet size: 1/8" and 1/4"
 - Free speed: 22,000 RPM
 - Average air consumption: 4 CFM
 - Length: 6.77"
 - Net weight: 1.25 lbs

Item #

17025



3" AIR CUT-OFF TOOL

- Ideal for cutting autobody panels or light sheet metal
- Cuts mufflers and tail pipes quickly and efficiently
- Chrome plated steel guard protects you from sparks
- Specifications:
 - Wheel Size: 3" x 3/8" arbor
 - Free Speed: 20,000 RPM
 - Average Air Consumption: 4 CFM
 - Length: 7.36"
 - Weight: 1.67 lbs

Item #

17030



5 PC AIR HAMMER KIT

- Ideal for general body shop and repair work
- Heat treated piston for increased durability
- Comes with 4 chisels
- Specifications:
 - Blows per minute: 4,500 BPM
 - Barrel stroke: 1-5/8" / 41 mm
 - Chisel shank: 0.4" / 10.2 mm
 - Average air consumption: 4 CFM
 - Length: 5.1"
 - Weight: 2.42 lbs

Item #

17050



1/4" AIR RATCHET

- Lightweight and compact
- Ball type retainer for positive socket retention
- 25 ft/lb Maximum torque
- Specifications:
 - Free speed: 250 RPM
 - Average air consumption: 2.8 CFM
 - Length: 7.36"
 - Net weight 1.21 lbs

Item #

17005



6" RANDOM ORBIT AIR SANDER

- Lightweight and compact design
- Provides smooth swirl free finishes
- For surface preparation before painting
- Uses standard 6" Hook & Loop discs
- Specifications:
 - Orbit diameter: 3/32"
 - Free speed: 10,000 RPM
 - Average air consumption: 2.2 CFM
 - Length: 8.41"
 - Net weight: 2.02 lbs

Item #

17065



AIR POP RIVETERS

- Extra nozzles store in base
- Quick release air valve permits cylinder to return quickly for high speed assembly operations
- Get into hard-to-reach areas
- 4 Nose pieces: 3/32", 1/8", 5/32", 3/16"

Item #	Size
17080	3/16"
17082	1/4"



AIR GREASE GUN

- 3-way loading: Standard 14 oz cartridge, pressure fill, 400 cc bulk
- 1,200 to 6,000 PSI at 30 to 50 PSI from air compressor
- Air valve allows trapped air to be released
- Includes rigid and flexible hoses

Item #
17090



NEEDLE SCALER

- Ideal for removing welding slag, rust, paint and scale from most surfaces
- Comes complete with 19 needles (3mm)
- Average air consumption: 4.0 CFM

Item #
17137



AIR RECIPROCATING SAW

- Ideal for general body shop and repair work
- Great for cutting sheet metal and plastic
- Average air consumption: 2.2 CFM

Item #

17140



SAND BLASTING GUN

- Designed for fast and efficient sand blasting
- Includes: 3' hose with breather, 5 mm nozzle, and 6 mm nozzle

Item #

14070



AIR ENGINE CLEANING GUN WITH HOSE

- The fast easy way to clean dirt, grease, grime, salt, mud, and more.
- Includes a 4' hose with built-in strainer for solvent or detergent
- Specifications:
 - Length: 15-1/2"
 - Average air consumption: 5 CFM
 - Air inlet: 1/4" F NPT
 - Air pressure: 90 PSI

Item #

14072



3 PC SET HVLP SPRAY GUN

- Includes: 2 High Volume Low Pressure (HVLP) Spray Guns, 1.4 Tip and 1.7 Tip, 1 Regulator
- Fast working speed and wide fan pattern
- High transfer efficiency means reduced spray mist
- Stainless steel needle and fluid tip allows use with water based paints
- Specifications:
 - Average Air Consumption: 9.0 CFM @ 41 PSI / 11.0 CFM @ 43 PSI
 - Operating Pressure: 15 To 43 PSI
 - Air Inlet: 1/4" NPT
 - Capacity: 0.6 L

Item #

18903



TOUCH-UP SPRAY GUN

- Great for detail and custom painting
- Fast and easy clean-up
- Specifications:
 - Average air consumption: 8.2 CFM
 - Operating pressure: 50 to 70 PSI
 - Nozzle size: 1.5 mm
 - Capacity: 200 ml

Item #

18906



PAINT SPRAY GUN

- Designed for autobody and light industrial jobs
- Fine spray adjustment
- Drip proof container
- Specifications:
 - Average air consumption: 14.5 CFM
 - Operating pressure: 50 to 70 PSI
 - Nozzle size: 2.0 mm
 - Capacity: 1 L

Item #

18912



MINI GRAVITY FEED DETAIL SPRAY GUN

- Great for detail and custom painting
- Gravity feed
- Metal cup
- Specifications:
 - Average air consumption: 8.0 CFM
 - Operating pressure: 20 to 50 PSI
 - Nozzle size: 0.8 mm
 - Capacity: 200 ml

Item #

18921



HVLP SPRAY GUN WITH REGULATOR

- Fast working speed and wide fan pattern
- High transfer efficiency means reduced spray mist
- Stainless steel needle and fluid tip allows use with water based paints
- 0.6 L aluminum paint cups
- Specification:
 - 0 to 140 PSI
 - Air inlet: 1/4" NPT
 - HVPL Specifications:
 - Average air consumption: 7.5 CFM
 - Capacity: 0.6 L
 - Operating pressure: 20 to 50 PSI
 - Nozzle size: 1.4 mm

Item #

18936



LOW PRESSURE SPRAY GUN

- Works great with small compressors
- Specifications:
 - Average air consumption: 3 CFM
 - Max working pressure: 50 PSI
 - Nozzle size: 1.4 mm
 - Capacity: 1 L

Item #

18941



AIR BRUSH KIT

- Single action, external mix siphon feed
- Spray pattern adjusts from 1/4" to 1 1/2"
- Includes:
 - Air brush
 - 2 Glass bottles
 - 4 Vinyl hoses
 - Propel regulator valve
 - 1/4" NPT female adapter for air brush hose
 - Wrench
 - Paint dropper

Item #

18947



PROFESSIONAL AIR BRUSH KIT

- Double action, internal mix, gravity feed air brush
- Includes: Wrench, 1/4" barbed hose adapter, Paint dropper

Item #

18948



5 PC AIR HAMMER CHISEL SET

- Use with air hammers
- Made from heat-treated carbon steel for superior strength
- Ideal for cutting, chipping, scraping, and paint removal

Item #

14142



17 PC SPRAY GUN CLEANING KIT

- Ideal for cleaning all types of paint spray guns, airbrushes and other thin tubes and nozzles
- Includes: 1 Plastic handle nylon brush, 1 Nylon end brush, 1 Nylon tube brush 11-1/2" x 7/16", 1 Nylon tube brush 6" x 3/8", 1 Nylon tube brush 6" x 1/4", 1 White nylon tube brush 9" x 7/16", 5 Mini nylon tube brushes, 6 Cleaning needles

Item #

14313

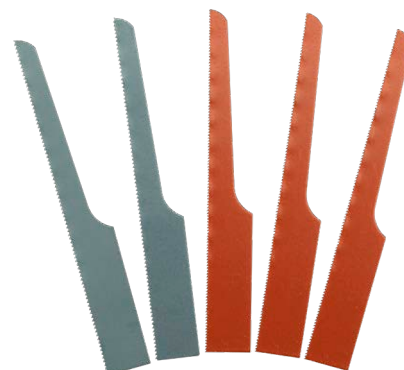


5 PC FILTER FOR HVLP SPRAY GUN

- Removes dirt particles from paint to protect against defects

Item #

14338



AIR RECIPROCATING SAW BLADES

- Multipurpose blades for cutting a variety of material
- 2 x Coarse 24 TPI and 3 x Fine 32 TPI

Item #

15020



5" HOOK AND LOOP BACKING PAD

- High quality hook and loop backing for long life
- Use with pneumatic sanders

Item #

53010



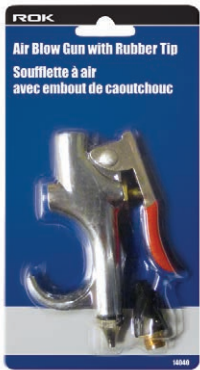
6" PSA BACKING PAD

- Fits most dual action air sanders

Item #

53012

AIR BLOW GUNS



AIR BLOW GUN WITH RUBBER TIP

- Blow away dust, dirt and shavings
- Easy-to-handle
- 1/4"-NPT
- Maximum pressure: 90 PSI

Item #

14040



AIR POCKET BLOW GUN M-STYLE

- Pocket blow gun with pocket clip
- Anodized aluminum body
- Easy twist on-off
- 1/4"-NPT
- Maximum pressure: 150 PSI

Item #

14041



AIR BLOW GUN

- Blow away dust, dirt and shavings
- Easy-to-handle
- 1/4"-NPT
- Maximum pressure: 150 PSI

Item #

14082

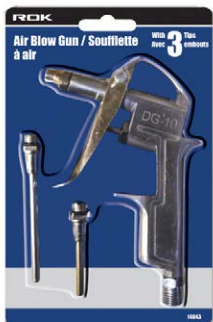


SAFETY BLOW GUN

- Brass safety tip reduces pressure to 30 PSI when dead ended
- Lever style design for easy control
- Hanging hook for easy storage
- 1/4" NPT
- Maximum pressure: 150 PSI

Item #

14084



AIR BLOW GUN WITH 3 TIPS

- Includes: Standard nozzle, 2" nozzle, 3" nozzle, 1/4" M NPT

Item #

14043



AIR BLOW GUN WITH 5 TIPS

- Trigger handle easily controls air flow while the rubber tip protects work piece surfaces from scratching
- Chrome plated body
- 1/4" NPT
- 4 Steel tips to handle many jobs
- Rubber tip for non-marring

Item #

14042



AIR BLOW GUN TELESCOPIC

- Simply twist the adjusting knob to extend the tube to desired length
- Adjusted length: 12-1/2" to 22"
- 1/4" NPT air inlet size
- Maximum working pressure: 150 PSI

Item #

14085



4" EXTENSION BLOW GUN

- Offers variable flow control
- Rugged, durable and comfortable to use "ergonomic design"
- Lightweight
- 1/4" NPT
- Improved valve design makes it effective for all applications

Item #

14044



EXTENSION BLOW GUNS

- Offers variable flow control
- Rugged, durable and comfortable to use "ergonomic design"
- Lightweight
- Improved valve design makes it effective for all applications
- professional quality
- Safety tip
- 1/4" NPT female brass insert

Item #

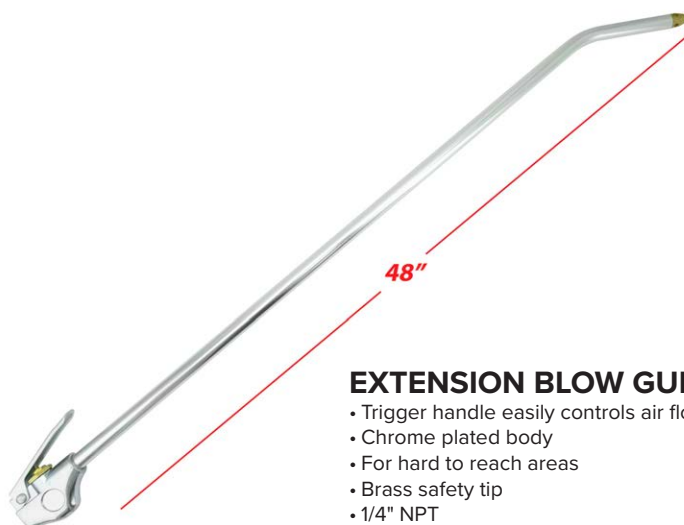
Size

14046

4"

14048

10"



EXTENSION BLOW GUN

- Trigger handle easily controls air flow
- Chrome plated body
- For hard to reach areas
- Brass safety tip
- 1/4" NPT

Item #

Size

14075

24"

14076

48"

AIR NAILERS



PIN NAILER 23 GA 1-3/8"

- Uses 1/2" to 1-3/8" 23 gauge headless pins
- Adjustable exhaust
- Lightweight aluminum die cast body
- Non-marring tip

Item #

12017



PIN NAILER 23 GA 2"

- Uses 1/2" to 2" 23 gauge
- Adjustable exhaust
- Lightweight aluminum die cast body
- Safety trigger
- Pin Indicator Window
- Non-marring tip
- Cushion grip
- Tool holder
- Extra driver included

Item #

12019



BRAD NAILER 18 GA 2"

- Use standard 5/8" to 2" 18 gauge
- Brad nails
- Lightweight aluminum die-cast body
- Quick release front
- 360° Adjustable exhaust

Item #

12010



BRAD NAILER 18 GA 2"

- Uses standard 5/8" to 2" 18 gauge brad nails
- Lightweight aluminum die-cast body
- Cushion grip
- Lightweight plastic magazine
- 360° Adjustable exhaust
- Quick release nose piece
- Contact safety

Item #

12008



2 PC BRAD NAILER 2" / STAPLER 1-1/2" KIT

- Includes safety glasses, O-ring kits and extra drivers
- Nailer (12010): use standard 5/8" to 2" 18 gauge brad nails
- Stapler (12020): Use 18 gauge narrow crown staples 5/8" to 1-1/2"

Item #

12050



BRAD NAILER / STAPLER 2-IN-1 18 GA

- Uses 5/8" to 2" 18 gauge brad nails and 5/8" to 1-5/8" 18 gauge narrow crown staples
- Adjustable exhaust
- Cushion grip
- Extra driver included

Item #

12040



STAPLER 5/8" T50 STYLE

- Uses standard staples available for hand and electric staplers (T50 Style: 5/32" to 5/8")
- Adjustable exhaust
- Lightweight aluminum die cast body
- Safety trigger
- Non-marring tip
- Cushion grip
- Tool holder
- Extra driver included

Item #

12025



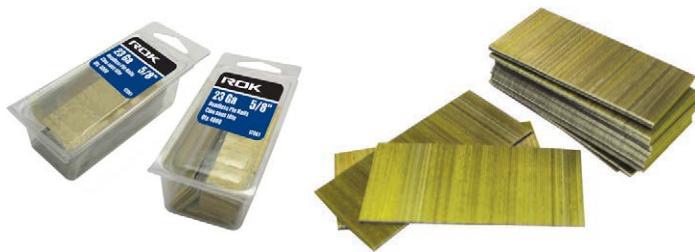
STAPLER 18 GA 1-1/2"

- Use 5/8" to 1-1/2" 18 gauge narrow crown staples
- Lightweight aluminum die-cast body
- Contact safety
- Quick release front
- Adjustable exhaust
- Cushion grip
- Extra driver included

Item #

12020

AIR TOOL FASTENERS



23 GA PIN NAILS

• Qty: 4,000 / box

Item #	Size	Item #	Size
12061	5/8"	12066	1-3/16"
12062	11/16"	12067	1-3/8"
12060	1/2"	12068	1-9/16"
12063	7/8"	12072	2"
12064	1"		



18 GA BRAD NAILS

• Qty: 5,000 / box

Item #	Size	Item #	Size
12400	3/8"	12404	1-3/16"
12409	2"	12405	1-3/8"
12401	5/8"	12406	1-1/2"
12402	3/4"	12407	1-9/16"
12403	1"	12408	1-3/4"



18 GA STAPLES 1/4 CROWN

• Qty: 5,000 / box

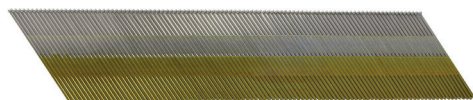
Item #	Size	Item #	Size
12600	1/2"	12604	1"
12601	5/8"	12605	1-1/8"
12602	3/4"	12606	1-1/4"
12603	7/8"	12607	1-1/2"



16 GA BRAD NAILS

• Qty: 2,500 / box

Item #	Size	Item #	Size
12422	1-1/4"	12425	2"
12423	1-1/2"	12426	2-1/4"
12424	1-3/4"	12427	2-1/2"



15 GA DA NAILS 2-1/2"

• 4,000 per box

Item #	Size
12436	15 Ga DA Nails 2-1/2"

TIRE TOOLS



TIRE CHUCK WITH LOCK CLIP

- Locks onto valve during inflation
- Brass
- 1/4" NPT female thread

Item #

14031



TIRE CHUCK - BALL TYPE

- Heavy duty solid brass construction
- Valve end is offset to keep hose out of way during inflation
- 1/4" NPT female thread
- Ball type

Item #

14034



TIRE CHUCK WITH DUAL HEAD

- Dual head to get into hard to reach spots
- Chrome plated
- 5-3/4" long
- 1/4" NPT female thread

Item #

14036



TIRE CHUCK H.D.

- Dual head
- Heavy duty with rubber grip
- Comfortable and lightweight design

Item #

14080



6" TIRE GAUGE DUAL HEAD

- With pocket clip
- 10 to 120 PSI

Item #

14032



HEAVY DUTY TIRE GAUGE

- Dual head
- Hanging ring
- Chrome plated
- 0 to 150 PSI

Item #

14037



PENCIL TIRE GAUGE

- 5 to 50 PSI
- Quickly check tire pressure to ensure maximum fuel efficiency
- Pocket clip for easy access
- Sold in 25 PC display box

Item #

13990



ROUND TIRE GAUGE

- 5 to 60 PSI
- Large gauge is easy to read
- Easy to hold rubber casing
- Sold in 12 PC display box

Item #

13992



TIRE INFLATING GUNS WITH GAUGE

- Trigger controls airflow into tire
- Clip on design allows for one handed usage
- Built in relief valve for reducing air in over-inflated tires
- 12" Heavy duty rubber hose
- Rubber protected gauge

Item #

14027



TIRE INFLATING GUN WITH GAUGE

- Air inlet: 1/4" NPT
- Working pressure: 10 - 220 PSI
- 12" Heavy duty rubber hose
- 6" Chrome plated steel dual chuck offset to allow easy access to all valve
- Rubber protected gauge

Item #

14035



TIRE INFLATING GUN

- Dual head tire chuck to get into hard to reach spots
- 10 to 170 PSI pressure gauge
- Flexible hose
- Air inlet: 1/4" NPT female thread
- 12" Flexible hose
- 6" Chrome plated steel dual chuck offset to allow easy access to all valves

Item #

14038



8 PC TUBELESS TIRE REPAIR KIT

- For temporary repair of tubeless tire punctures
- Includes: Rasp tool, Insert tool, 5 repair plugs and tire gauge
- Comfortable ergonomic handles

Item #

14888



7 PC TUBELESS TIRE REPAIR KIT

- For temporary repair of tubeless tire punctures

Item #

14892



20 PC TUBELESS TIRE REPAIR PLUG

- For the temporary repair of tubeless tire punctures.

Item #

14894



TIRE PATCH KIT

- For all rubber repairs

Item #

14893



VALVE REPAIR TOOL 4 WAY

- Removes valve cores
- Taps internal and external threads
- Reams inside of valve stems

Item #

14898



10 PC TIRE VALVE CAP

- Universal size fits for most cars, trucks, SUVs, motorcycles and bikes
- Protects valve from dirt, dust and corrosion

Item #

14895



4 PC SLOTTED METAL TIRE VALVE CAP

- Slotted caps can be tightened securely and are easy to remove
- Universal size fits for most cars, trucks, SUVs, motorcycles and bikes
- Protects valve from dirt, dust and corrosion

Item #

14896



4 PC NEEDLE INFLATOR

- For use with tire chucks

Item #

14078





BICYCLE PUMP WITH GAUGE

- Chrome body
- Plastic "T" handle
- Foldable support
- 20" Hose with thumb-lock

Item #

P012705



BICYCLE FOOT PUMP WITH GAUGE

- Versatile, compact design
- Rugged construction
- 24" Hose with thumb-lock
- Extra large cylinder
- Non-slip foot pedal

Item #

P012805



6" TIRE GAUGE

- Correct tire inflation
- Increase gas mileage
- For bikes or auto
- 10 - 100 PSI
- 70 - 700 KPA
- 6" Length

Item #

T008860